



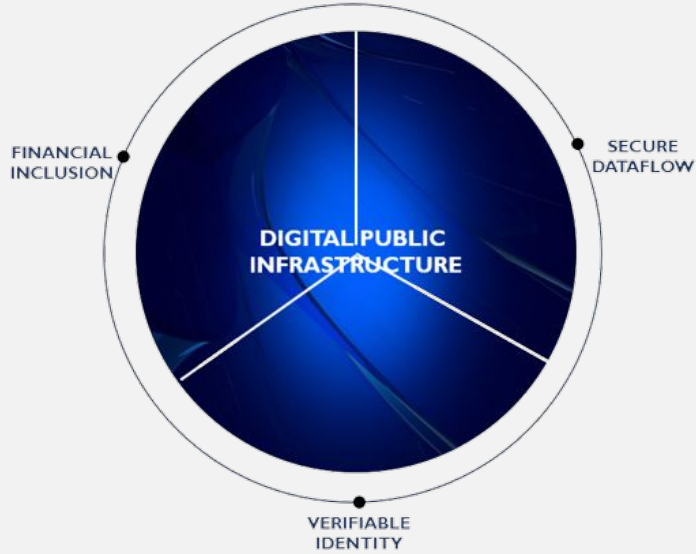
15th- 16th
October 2024
Nairobi, Kenya

**Enabling
rural
economies:**



**Creating lasting
impact for the
digital ecosystem
in Africa.**

#ALE2024
#AgriFinALE2024



It matters to the globe, it is the backbone

Building the Digital Backbone: scaling Agricultural Solutions and Innovation with Digital Public Infrastructure

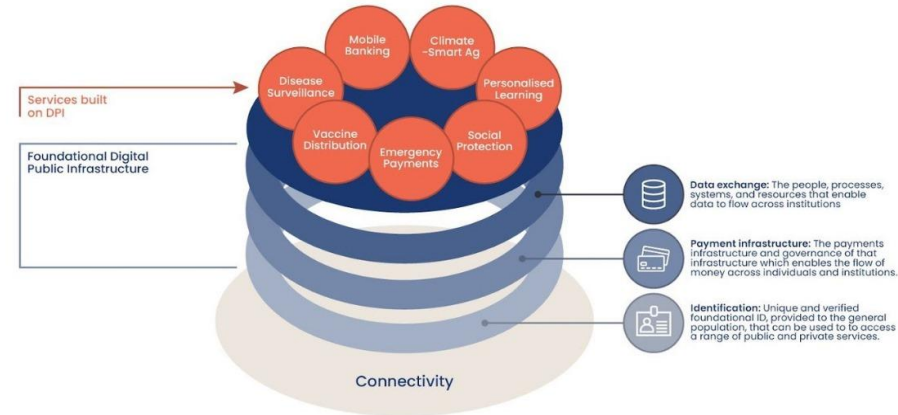
Presentation by:

Boniface Akuku (PhD)

Digital Development Specialist

Demystifying DPI

DPI is an approach to solving socio-economic problems at scale that combines intentional and focused technological interventions, public-private data governance, and deploying market-facing innovation to combat information overload and distractions (intentional engagement -meaningful digital interactions and not mindless scrolling-)



Core Components of DPI



Digital Identity Systems
(Authentication)



Digital Payments



Governance (Data exchange,
policies and strategies)

Note: DPI is not merely a technological solution or output but a shift to "infrastructure thinking." It involves a holistic approach to understanding and improving systems, emphasizing the interconnectedness of components within an ecosystem- **systems perspective, Sustainability, Adaptability, and Collaboration**-. DPI is not just about solving problems but also about **fostering innovation**. It is the **backbone** for delivering **essential digital public services** and **unlocking the potential** for groundbreaking innovation across sectors.

Why DPI?

To strategically develop and harness technology architecture as infrastructure to enhance **digital public services and sustainable economic growth, inclusivity, transparency, and innovation** in the digital economy.

1. DPI as a Foundational Layer for Digital Services



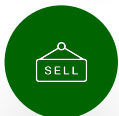
Cross-Cutting Nature

DPI supports various functions like identification, payments, and data exchange, enabling seamless transactions across sectors.



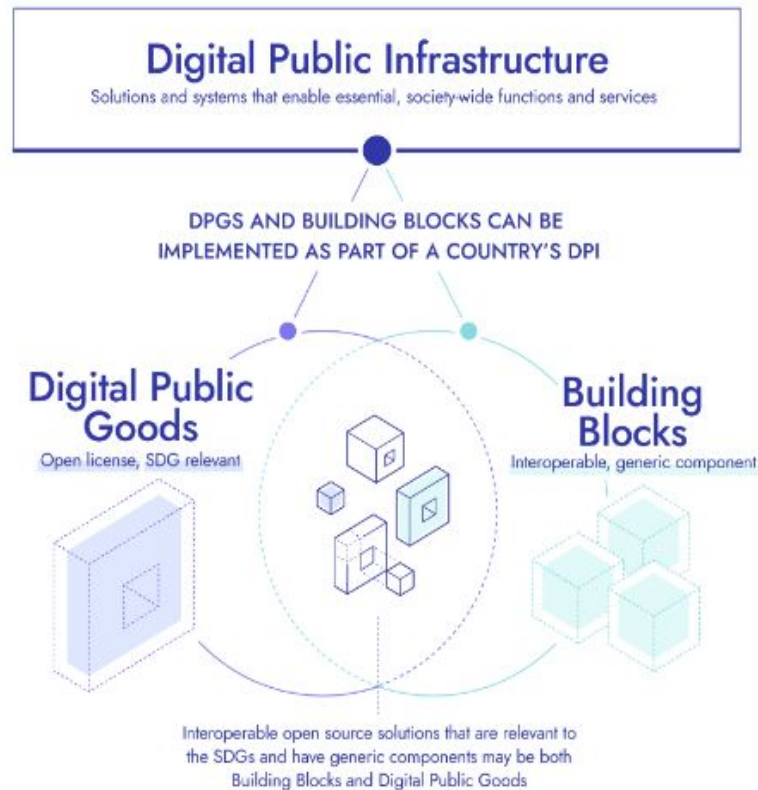
Interoperability

By establishing common standards and protocols, DPI allows different systems to communicate effectively, reducing redundancy in service delivery.



Public Benefit

DPI prioritizes public interest by ensuring equitable access to digital services and fostering trust and transparency in data governance.



2. Importance of DPI in Development

01

Economic Growth

Well-developed DPI can accelerate GDP growth in low- and middle-income countries by facilitating digital transactions and services.

02

Social Inclusion

DPI reduces barriers to access, allowing marginalized communities to benefit from digital services like healthcare, education, and financial inclusion.

03

Empowerment

By providing individuals with secure digital identities and access to essential services, DPI empowers citizens to engage more fully in the economy.

3. DPI in Governance- Requirements

Data Protection and Regulatory Frameworks

- Data Governance and privacy measures including laws and regulations are critical for safeguarding citizen's rights and information and accountability.

Capacity Building

- Experts within relevant institutions are essential for maintaining the integrity of DPI, ensuring data protection, and managing cybersecurity risks and effective service delivery

Public-Private Partnerships

- Collaboration between government entities and private sector innovators is crucial for developing scalable and sustainable DPI solutions

4. DPI for Access to Digital Services

A

Bridging the Digital Divide

DPI plays a critical role in ensuring equitable access to digital services for all citizens, regardless of geographical or socio-economic barriers

B

Scaling Digital Agricultural Services

01

Enhanced Data
Accessibility

02

Enabling Interoperability
and Integration

03

Fostering Innovation and
Economic Growth

04

Scalability of
digital Services

Examples of Success

- Kenya's e-citizen portal
- Kenya's Digital Farmer Registry
- India's Aadhaar system provides universal identification.
- India's Agri-Stack-brings stakeholders together to improve agricultural services
- Rwanda's Irempo platform offers over 100 government services online
- **Upcoming Malawi – National Agriculture Management Information System (NAMIS)**



15th- 16th
October 2024
Nairobi, Kenya

Thank you
for your
attention.

