



15th- 16th  
October 2024  
Nairobi, Kenya

**Enabling  
rural  
economies:**



**Creating lasting  
impact for the  
digital ecosystem  
in Africa.**

#ALE2024  
#AgriFinALE2024



# Enabling On-farm breeding using AI

Presentation by:

**Steve Mutuvi, PhD**

Research Scientist – AI/ML

# Enable On-Farm Breeding



Conversational  
Data

Speaker

NDIZI

Automatic Speech  
Recognition (ASR)

Farmers' Insights

Natural Language  
Processing (NLP)

and

Preferences

Speech Synthesis  
(TTS)



Research at Google



Alliance  
Bioversity & CIAT



Artemis 2



Artemis FM

Multi-Modal  
Analysis

Breeding Decisions



# Smart-phone enabled phenotyping

**Classical Phenotyping**

**Human Observation**

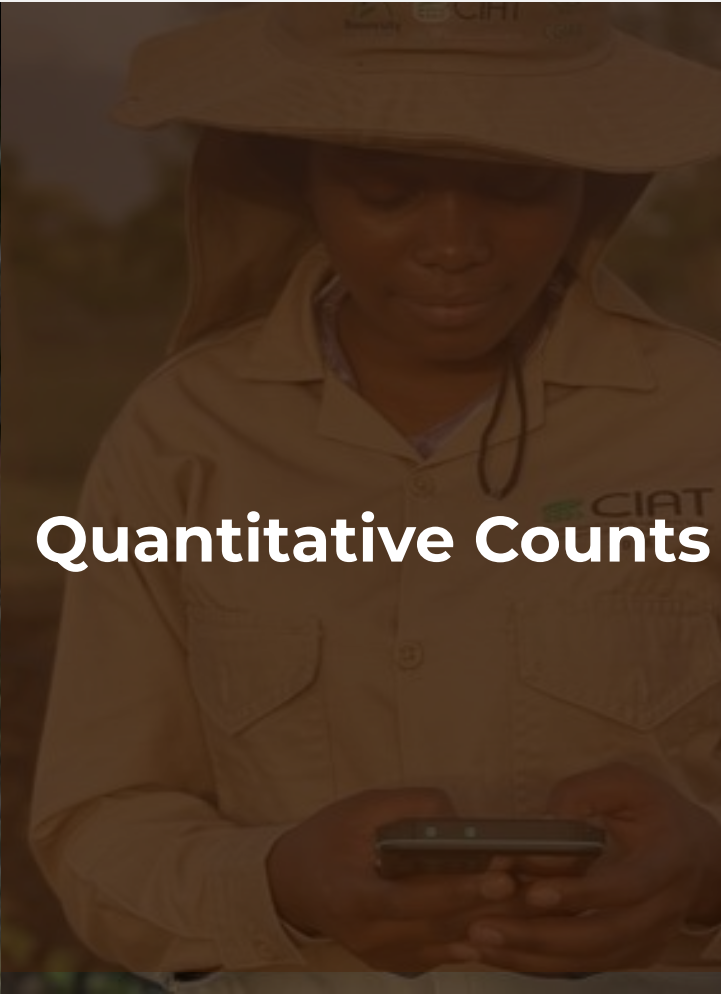


**Qualitative Estimates**



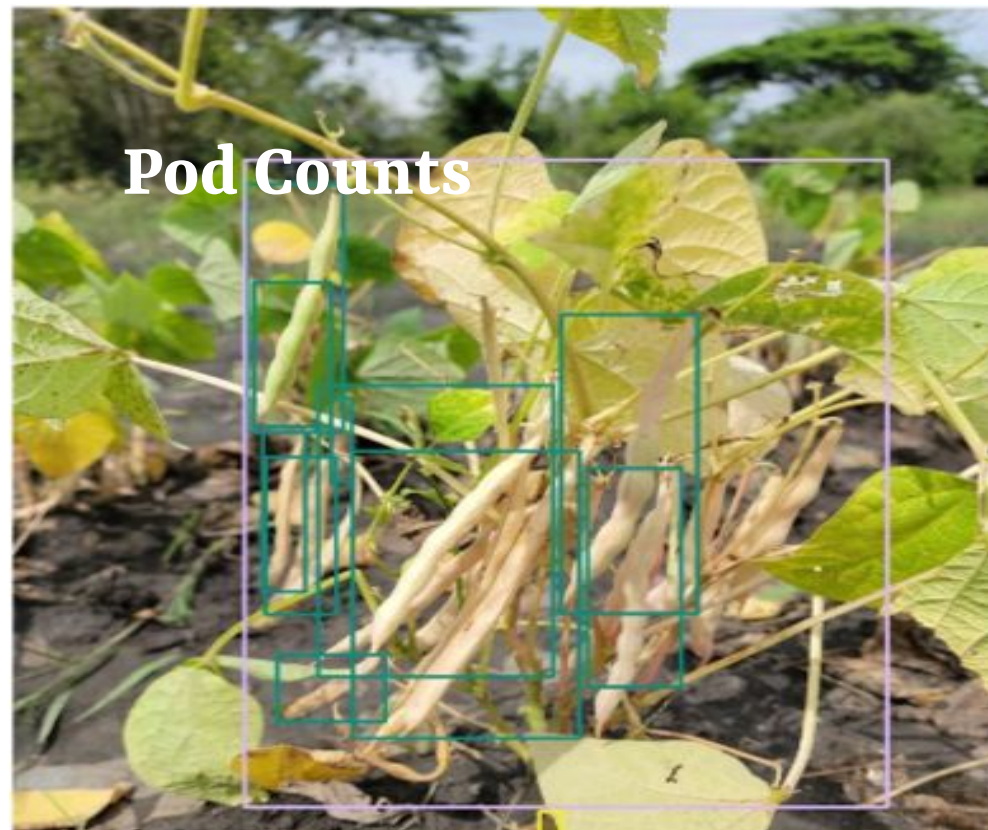


**Machine Observation**



**Quantitative Counts**

## Pod Counts



**COMMON BEANS**  $r^2$  0.84 from ~500 images



**COWPEAS**  $r^2$  0.83 from ~600 images

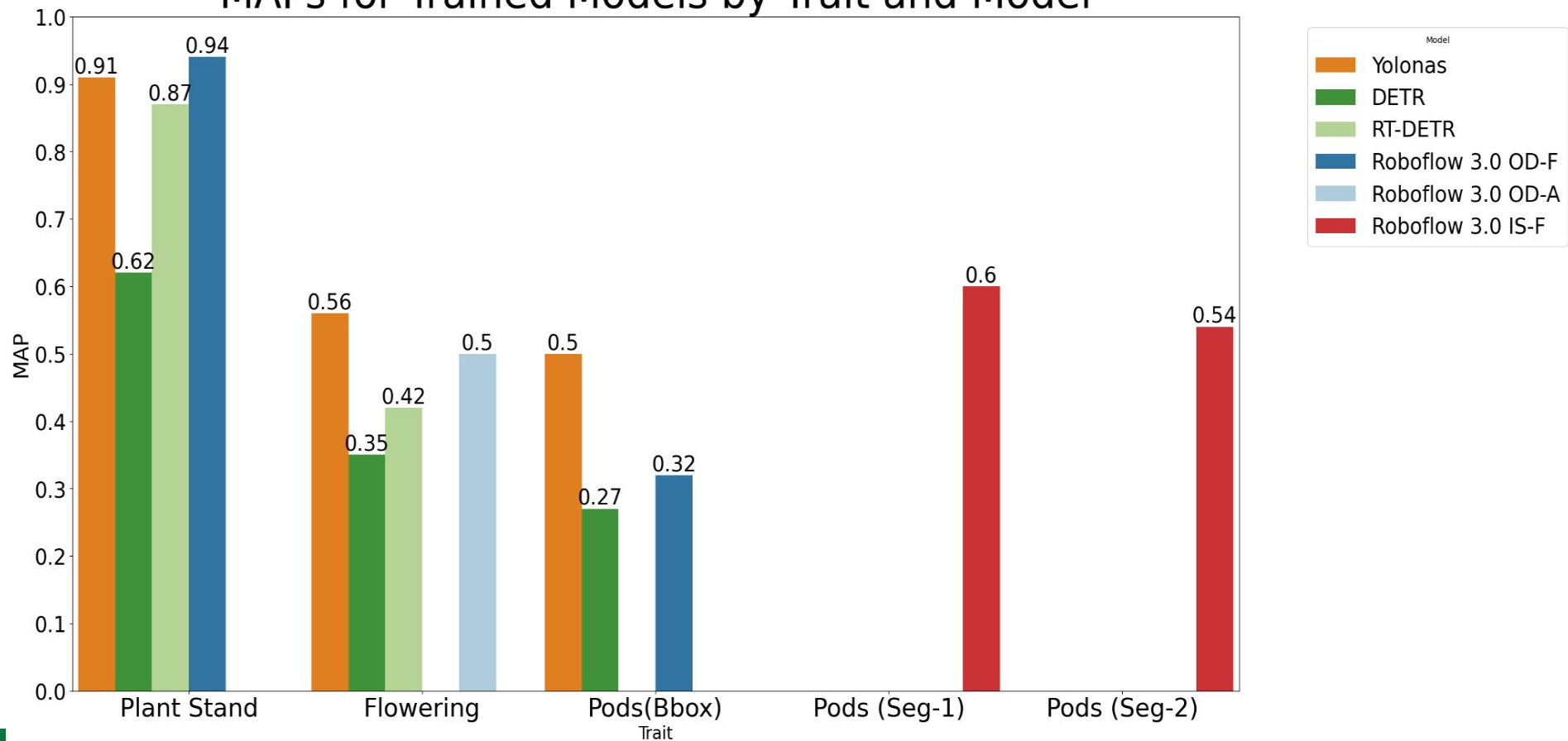


**COMMON BEANS**  $r^2$  0.94 from ~100 images



**SORGHUM**  $r^2$  0.85 from ~500 images

# MAPs for Trained Models by Trait and Model





# Eliciting Farmers insights and Preferences

## PROBLEM:

When developing new climate adapted crop varieties, improper or incomplete documentation of farmer preferences for new varieties tend to produce varieties that farmers don't want and won't grow.

Farmers growing maladapted varieties are vulnerable to crop loss due to increased climate induced stress, pests and disease for which they were not developed and tested.



## HYPOTHESIS:

Use of automatic speech recognition will improve the capture of farmers' feedback for variety trials conducted on their farms including unanticipated traits, diverse terminology, essential variety characteristics, visual indicators of crop performance . This information will generate more accurate farmer typologies and variety target product profiles



## Why Highland farmers in Kenya like H 614 D

Traits	H 614 D (released 1986)
Yield	Stable and adaptable in low yielding environment.
Grain	Shiny (appealing when purchasing seed) and round grain appearance. High-density grains that compensate for low physical yield. Grains are hard and resistant to any weevil attack.
Cobs	Very tight cobs that resist rot due to rain and attack by birds. Weevil resistant- cobs always come from the field weevil free.
Stalk	Strong and remain upright after drying.
Taste	Taste good in ugali and for roasting - <b>superior taste!</b>
Market	High demand , consumers go for it.
Experience	Farmers used to it as was widely promoted and the market like it

# Conventional Approaches



VARIETY 1



10 Quintals from a quarter of a hectare



Roasted or boiled maize cob does not taste good



Resistant to foliar diseases or pests

VARIETY 2



10 Quintals from a quarter of a hectare



Roasted or boiled maize cob tastes good



Susceptible to foliar diseases or pests

Surveys

Focus group discussions

Questionnaires

Interviews

Choice experiments

# NDIZI (NLP to Develop and Innovate Zero-shot Intelligence)

- Develop a robust and scalable speech-based system to understand farmers' insights and preferences.



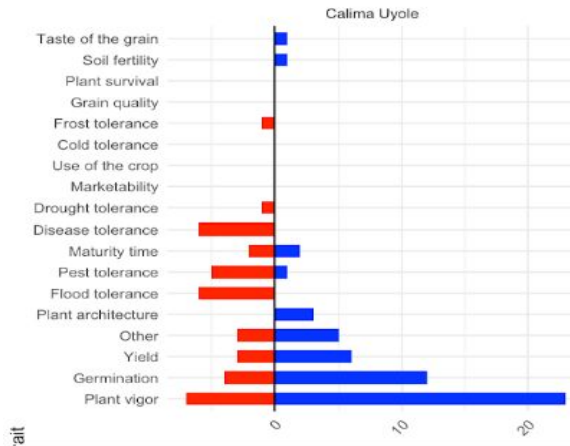
collection of audio data from farmers in which they express their preferences for different varieties

Angalia aina B na elezea chochote unachokiona ambcaho unakipenda kuhusu hiyo? Aina B nimeipenda imetoa vizuri kuliko A na C

Angalia aina B na elezea chochote unachokiona ambcaho unakipenda kuhusu hiyo? Aina B nimeipenda imetoa vizuri kuliko A na C

**ABSA:**  
**Aspect** - B  
**opinion** - nimeipenda imeota vizuri  
**Category** - plant vigor  
**Sentiment** - positive  
**Emotion** - Happy

## Audio transcription



Breeders

## Text annotation

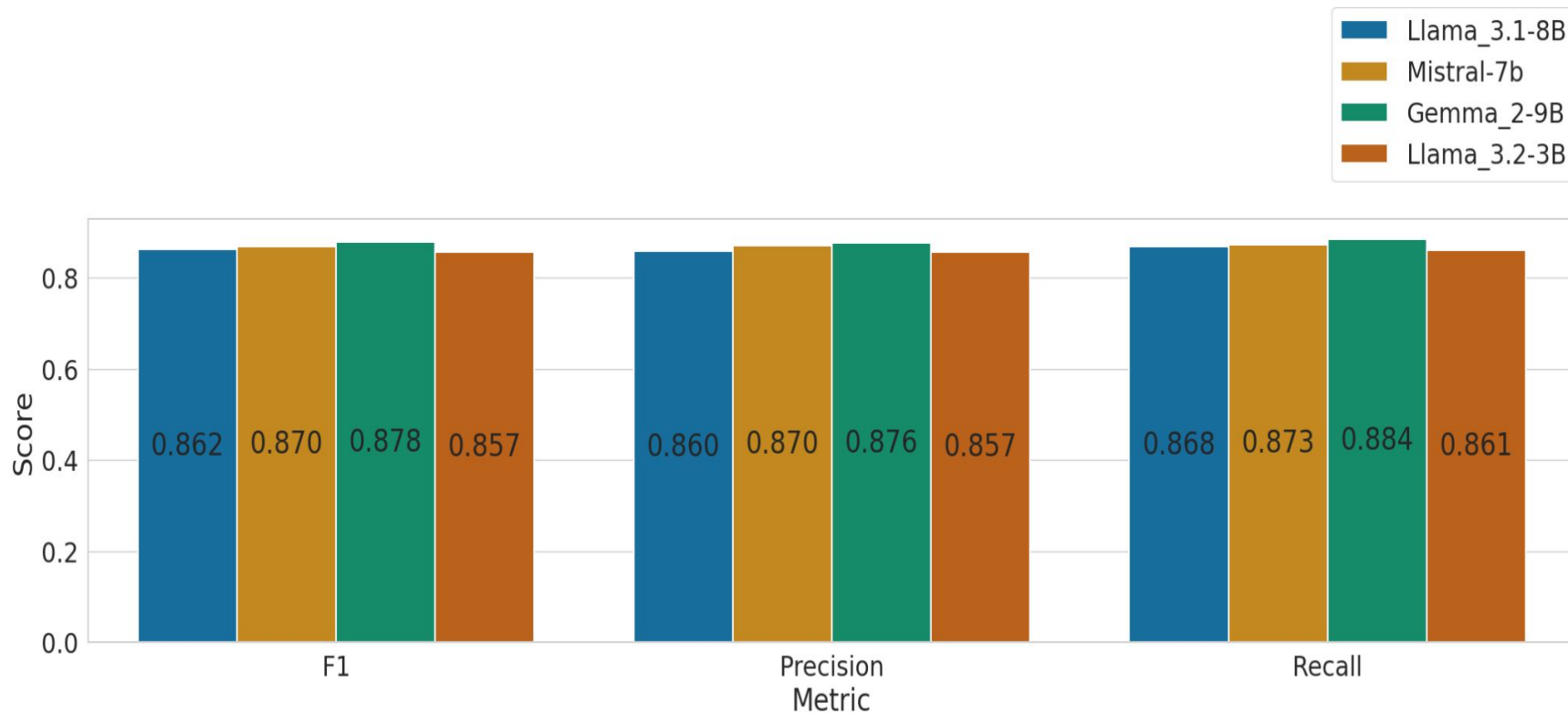


Model evaluation



Model training

# Model Performance Comparison



## Example Output

### Sentence

Je kuna kitu chochote hukukipenda kuhusu kukuza aina A? ee ni kuchelewa kuota na kuchelewa kukauka mmm kingine alafu na uzao wake sio mzuri kama C

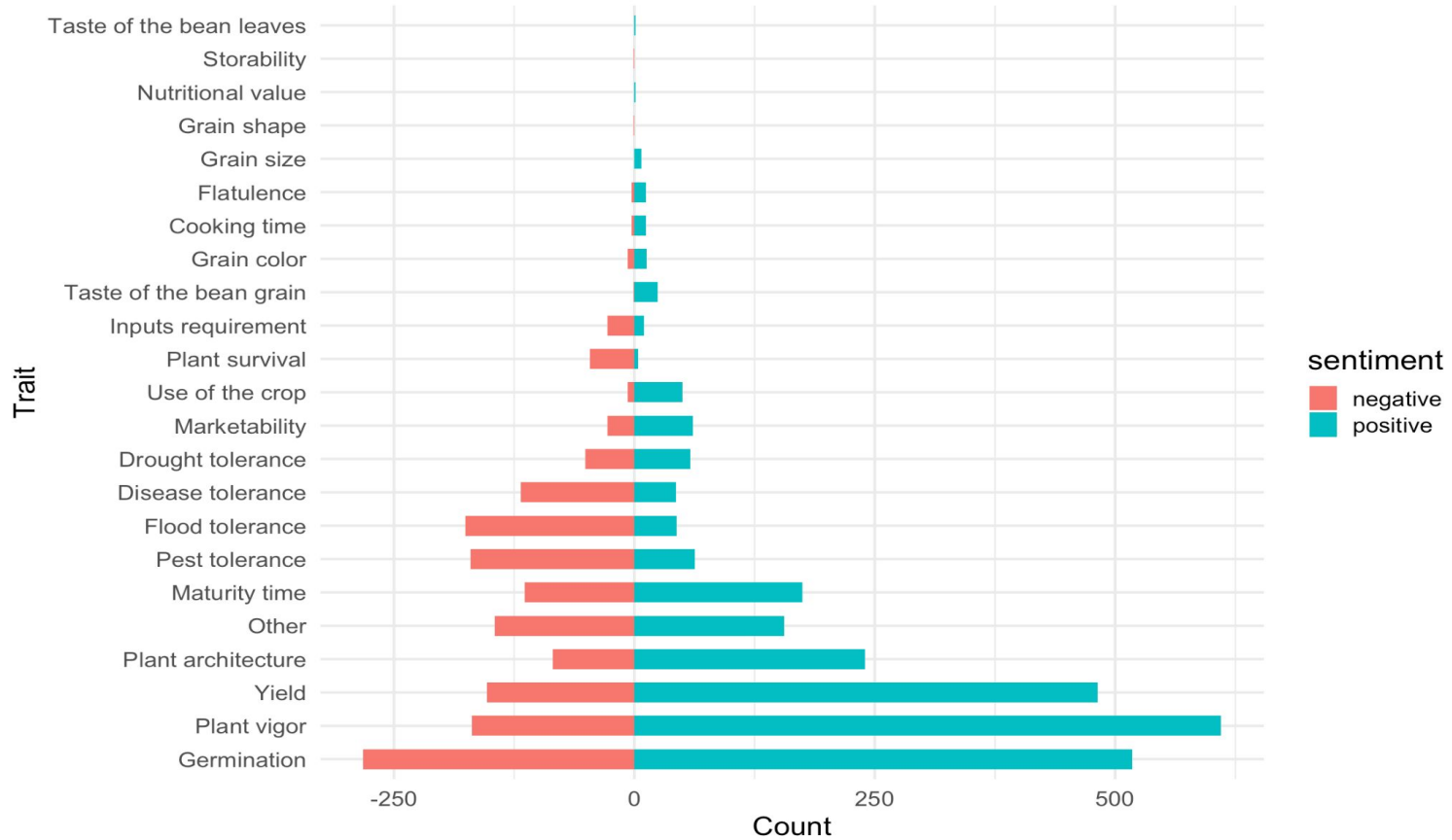
### Model Prediction

A|Germination|negative|kuchelewa kuota|Sadness/disappointment;  
A|Maturity time|negative|kuchelewa kukauka|Sadness/disappointment;  
A|Yield|negative|uzao wake sio mzuri|Sadness/disappointment

### Ground Truth

A|Germination|negative|kuchelewa kuota|Sadness/disappointment;  
A|Maturity time|negative|kuchelewa kukauka|Sadness/disappointment;  
A|Yield|negative|uzao wake sio mzuri|Sadness/disappointment

## Number of Trait Mentions by Sentiment





15th- 16th  
October 2024  
Nairobi, Kenya

Thank you  
for your  
attention.

